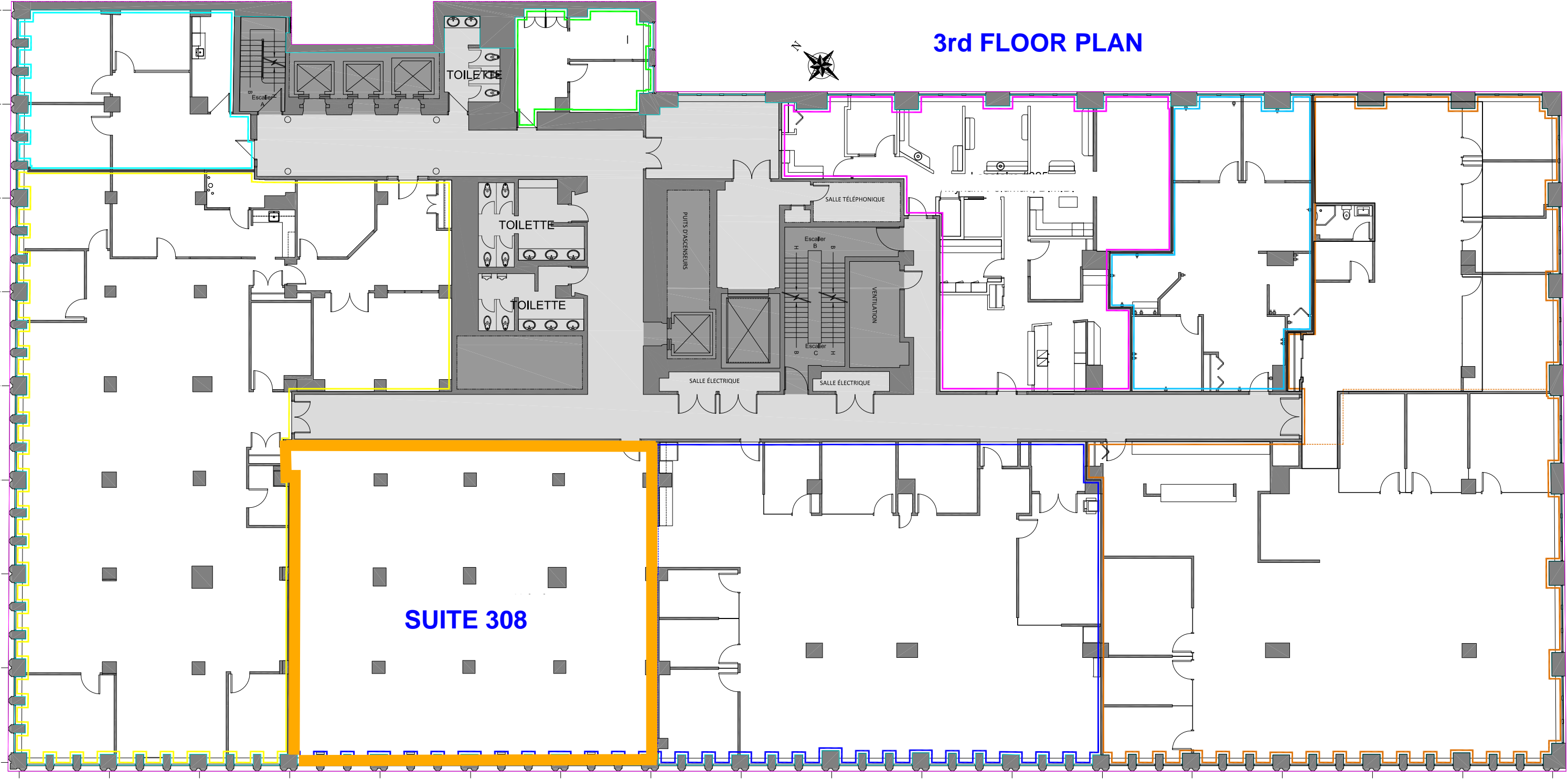


3rd FLOOR PLAN



SUITE 308

TOILETTE

TOILETTE

TOILETTE

SALLE TÉLÉPHONIQUE

SALLE ÉLECTRIQUE

SALLE ÉLECTRIQUE

VENTILATION

Puits d'Ascenseurs

Escalier A

Escalier B

Escalier C

Escalier H

SUITE 308

The image is a floor plan of Suite 308. It features a large rectangular room with a 3x3 grid of square fixtures, likely light fixtures or ceiling panels, arranged in three rows and three columns. The room is bounded by a blue line. On the left wall, there are three rectangular wall-mounted units. On the right wall, there are three rectangular wall-mounted units and a vertical structure with a dashed line, possibly a door or partition. The bottom edge of the room shows a series of small, rectangular protrusions, likely representing a baseboard or a row of small fixtures. The text "SUITE 308" is centered in the room in a bold, blue font.